

# Get With The Guidelines<sup>SM</sup> Stroke Stroke Performance Dashboard

Gwen Ainsworth, Stroke Data Registrar

Forsyth Medical Center

Winston- Salem, NC

May 13, 2009

## Overview of Dashboard Presentation

- Origin: Forsyth Stroke & Neurovascular Center
- Primitive Stroke Data Collection
- Inception of GWTG
- Creating the Stroke Performance Dashboard
- A Look Inside the Dashboard
- Where we are today

# 2004 Stroke Center Team



## My Role as Stroke Data Registrar

- Hired in April 2004
- Stroke data up to this point – **Nothing**
- Stroke data retro back to January  
(Hired in at 4 months behind)
- Stroke Database – **Nothing**
- In June: TJC coming for Stroke Certification

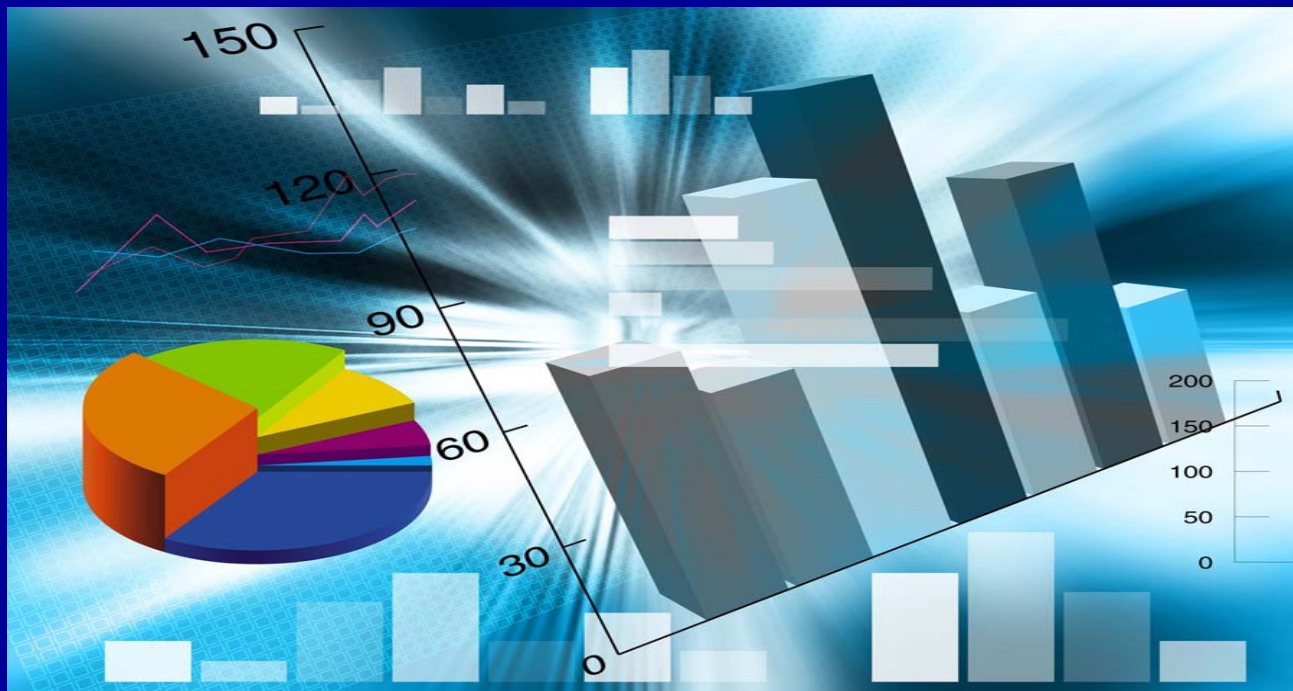
# Primitive Stroke Data Collection



## No Stroke Data – Where to Begin

- Obtained list of Coded Stroke/TIA patients
- Ordered charts from Medical Records  
in groups of 25 for review  
(Net Access: ED physician/nurses notes, H&P, D/C Summaries,  
Labs & Medications)
- Designed an Excel spreadsheet

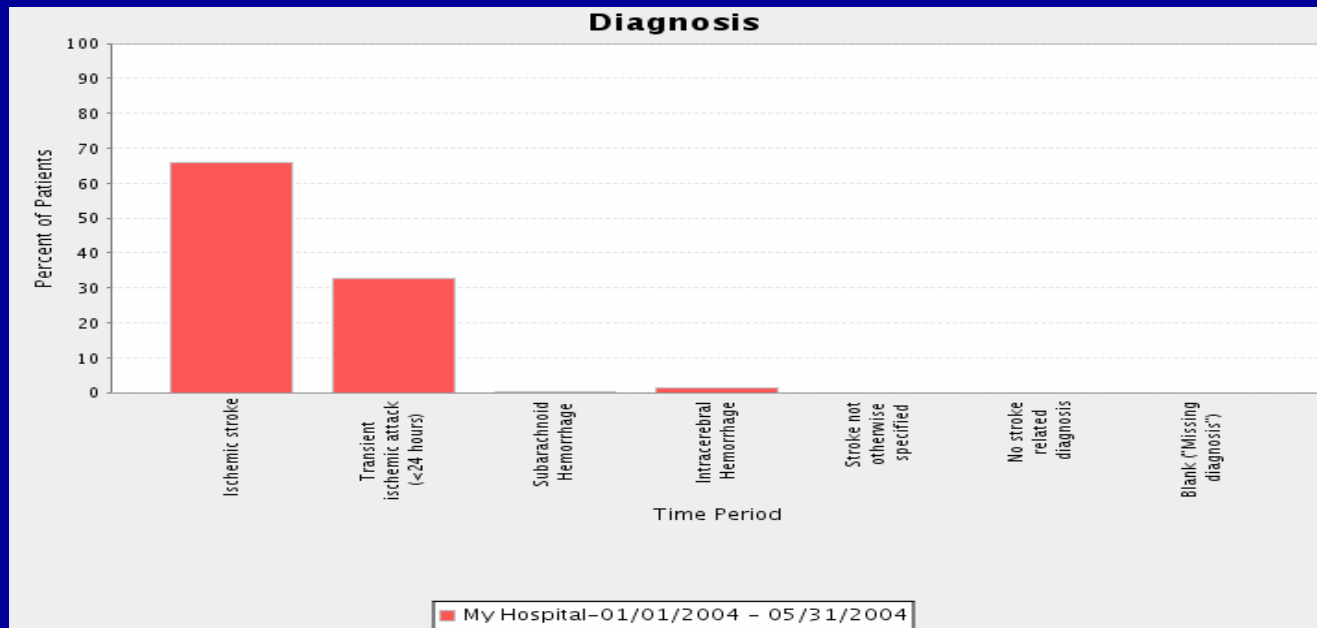
# Inception of GWTG PMT for Stroke



## GWTG Database

- April 27<sup>th</sup>, 2004 – Signed with AHA/GWTG
- Only 4 TJC measures required:
  - 1) Antithrombotics within 48 hrs
  - 2) IV t-PA Considered
  - 3) Warfarin for A-fib
  - 4) DVT Prophylaxis
- Enter all retro data collected on spreadsheet
- Remember: TJC – June for Stroke Certification

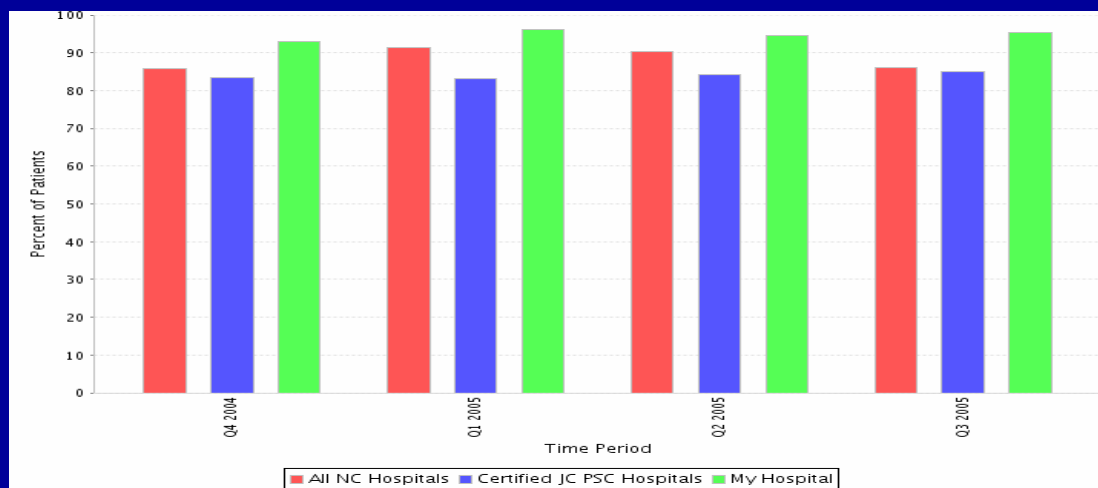
Diagnosis  
Patients grouped by clinical hospital diagnosis related to stroke  
Time Period: 01/01/2004 - 05/31/2004; Site: Forsyth Medical Center (24302)  
Completeness: Include Only Complete Records



Diagnosis									
Benchmark Group	Time Period	Ischemic stroke	Transient ischemic attack (<24 hours)	Subarachnoid Hemorrhage	Intracerebral Hemorrhage	Stroke not otherwise specified	No stroke related diagnosis	Blank ("Missing diagnosis")	Total
My Hospital	01/01/2004 - 05/31/2004	227 (65.8%)	112 (32.5%)	1 (0.3%)	5 (1.4%)	0 (0%)	0 (0%)	0 (0%)	345

**DVT Prophylaxis\***

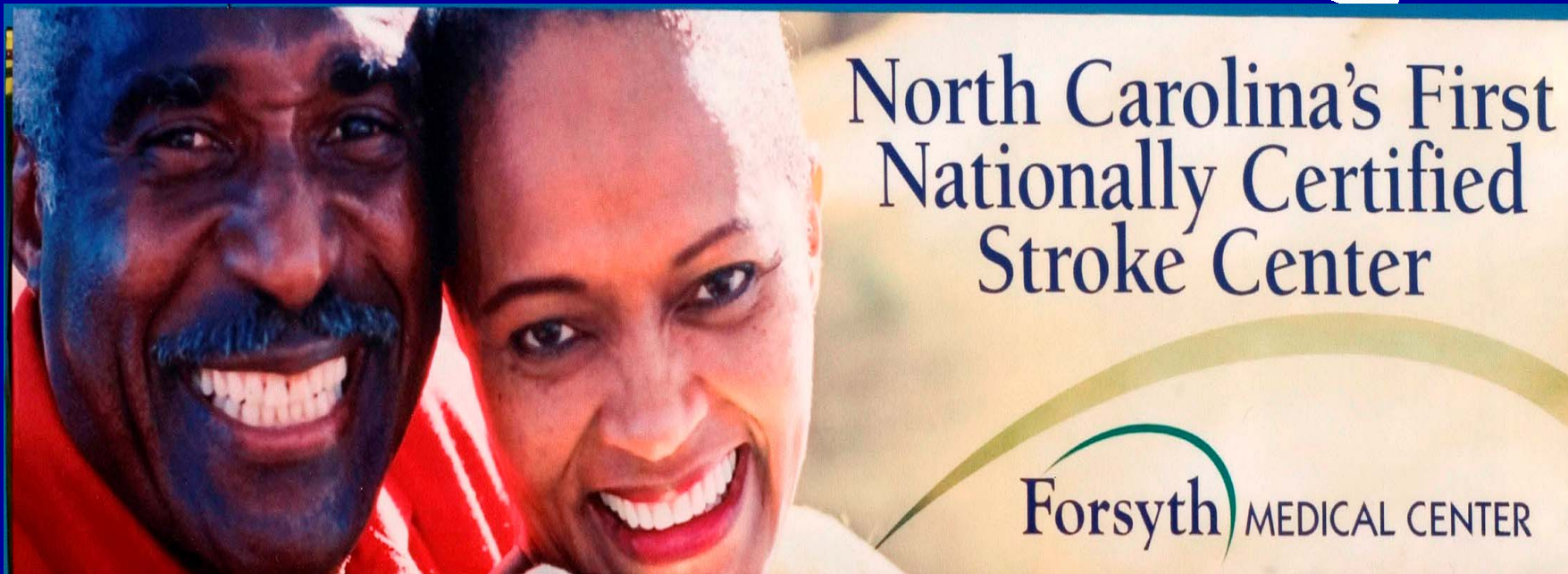
Percent of patients with an ischemic stroke, TIA, or a hemorrhagic stroke and who are non-ambulatory who receive DVT prophylaxis by end of hospital day two. Time Period: Q4 2004 - Q3 2005; Site: Forsyth Medical Center  
Completeness: Include Only Complete Records



DVT Prophylaxis*				
Benchmark Group	Time Period	Numerator	Denominator	% of Patients
All NC Hospitals	Q 4 2004	169	197	85.8 %
	Q 1 2005	190	208	91.3 %
	Q 2 2005	252	279	90.3 %
	Q 3 2005	315	366	86.1 %
Certified JC PSC Hospitals	Q 4 2004	2561	3066	83.5 %
	Q 1 2005	3764	4524	83.2 %
	Q 2 2005	4418	5243	84.3 %
	Q 3 2005	5549	6537	84.9 %
My Hospital	Q 4 2004	94	101	93.1 %
	Q 1 2005	123	128	96.1 %
	Q 2 2005	119	126	94.4 %
	Q 3 2005	124	130	95.4 %

We are ready for TJC

# TJC Visit in June 2004



## What Next?

- Interdisciplinary Stroke Team
- Stroke Database
- TJC Certification

How can we effectively share our Stroke data?



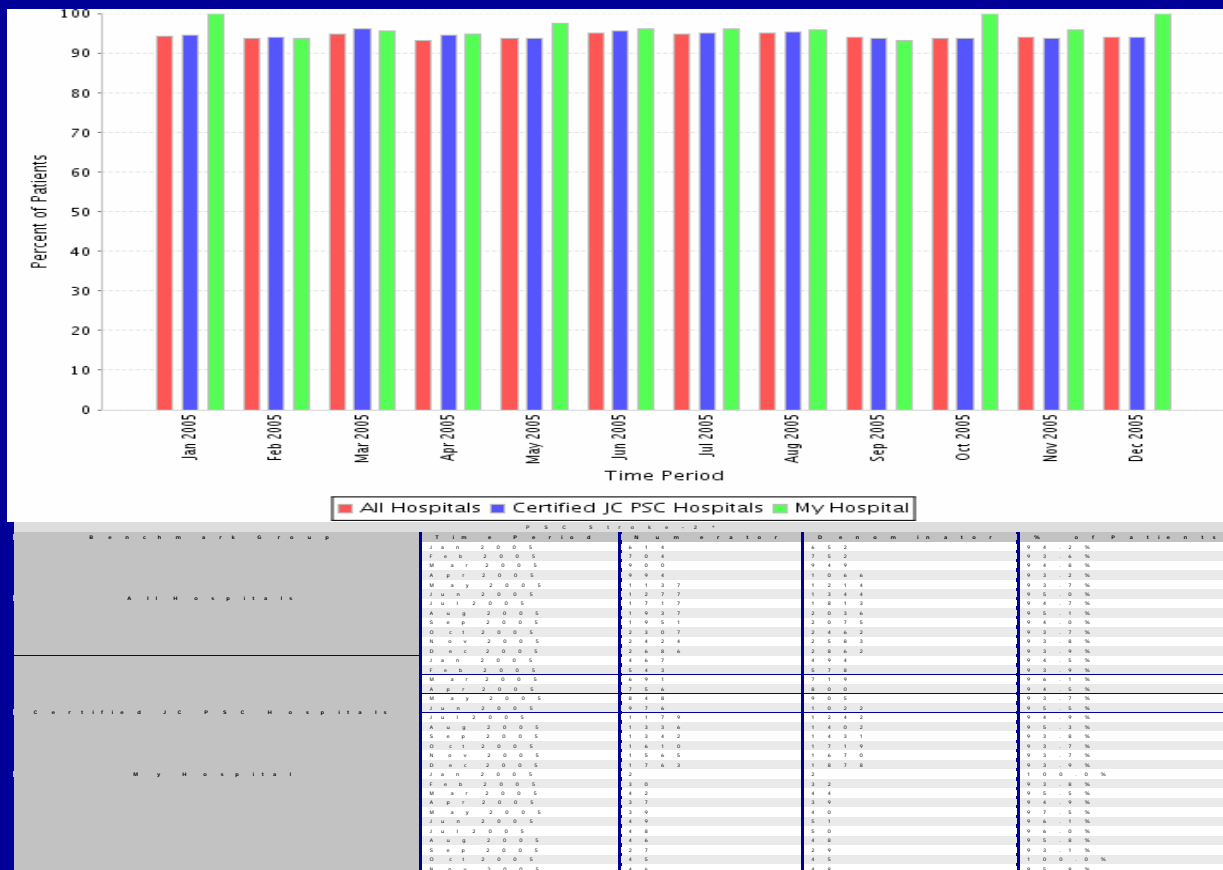
# TJC Stroke Measure Pilot Project

- Piloting all 10 Stroke Performance Measures
- Limited number of hospitals to participate
- Roll-out JCAHO Enhanced Version of GWTG
- Ran from Oct 2004 - Sep 2005

## AHA/GWTG-Performance Achievement Awards

**PSC Stroke-2\***

Percent of patients with an ischemic stroke prescribed antithrombotic therapy at discharge. Time Period: Jan 2005 - Dec 2005; Site: Forsyth Medical Center



# Creating the Stroke Performance Dashboard

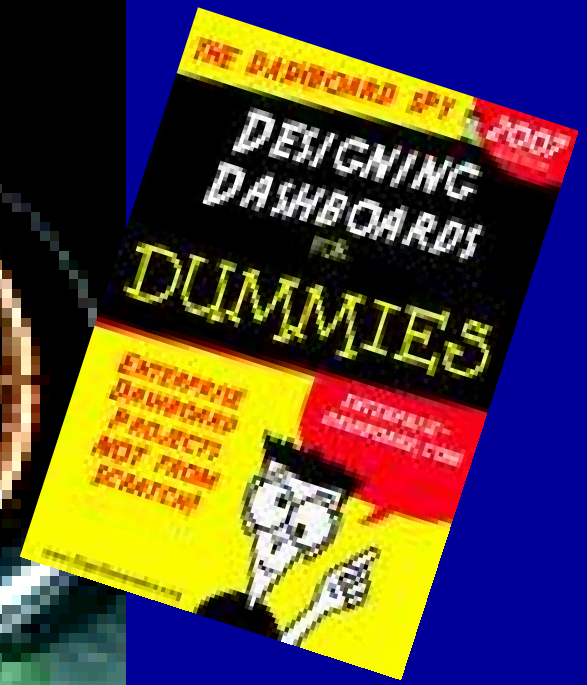
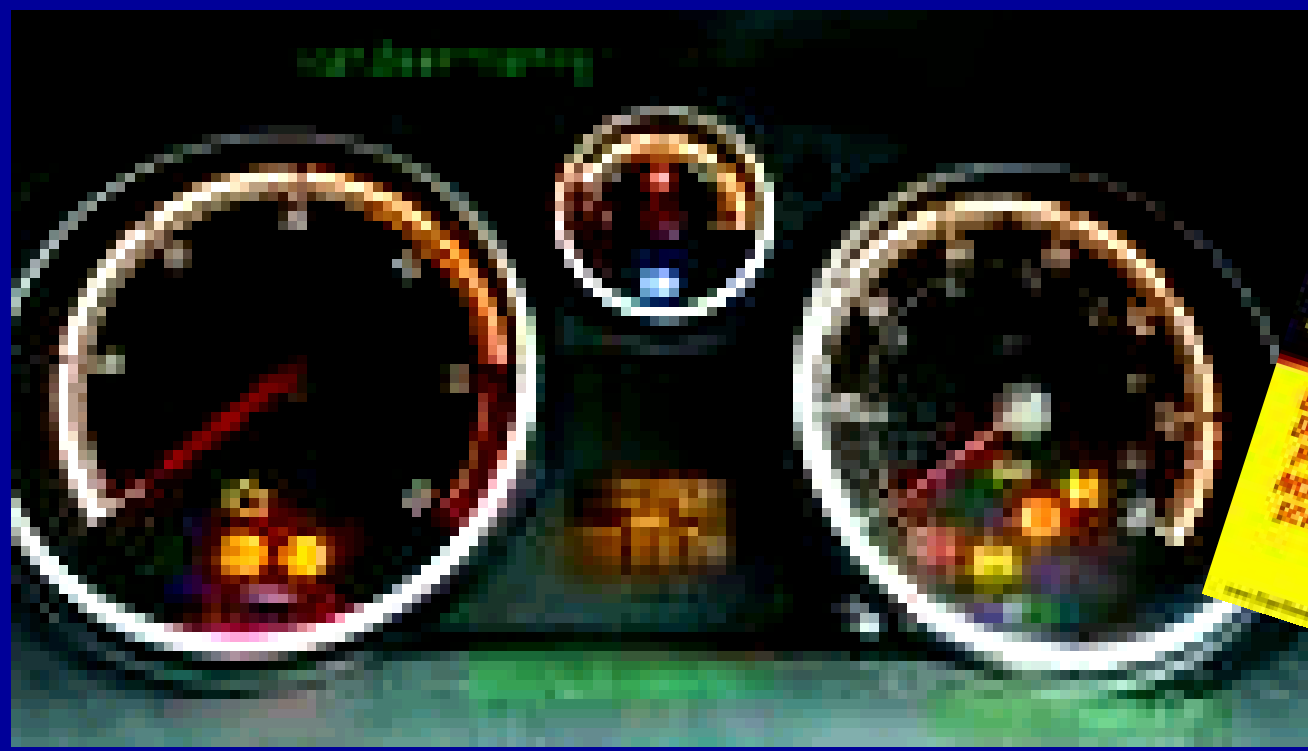
- Corporate Dashboard  
(Customer Satisfaction, CMS Indicators)
- Nicely Color Coded
- Good Visual
- Easy to Read
- Various Meetings/Disciplines

Please create something with our Stroke data!





# My perception of a Dashboard



# With the help of Clinical Improvement

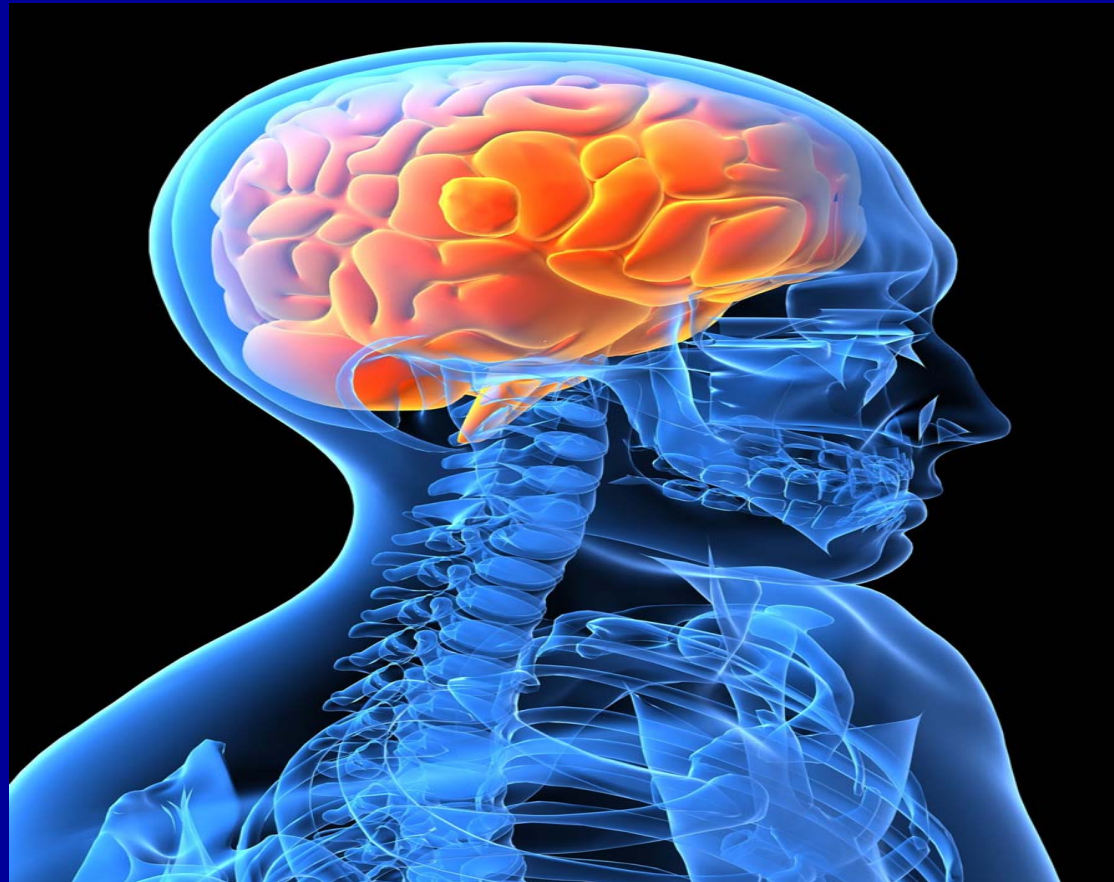
## 2005 MONTHLY

### Stroke Indicators Hospital Performance: Combined

Quality Measures	GWTG	2004 Total	Jan 05	Feb 05	Mar 05	Apr 05	May 05	Jun 05	Jul 05	Aug 05	Sep 05	Oct 05	Nov 05	Dec 05	2005 YTD	Top 10% of Hospitals Nationwide	Avg All Hospitals Reporting in US
<b>Stroke Indicators</b>																	
Dysphagia Screens		68%	73%	87%	71%	81%	77%	66%	70%	59%	69%	65%	77%	74%	72%	91%	60%
Discharge on Antithrombotics	*	99%	93%	93%	100%	100%	100%	99%	99%	99%	97%	98%	99%	98%	98%	97%	96%
Throm w/in 48hrs	*	98%	100%	96%	100%	98%	100%	96%	98%	99%	94%	97%	99%	98%	98%	98%	94%
Lipid Profile	^	77%	85%	80%	77%	74%	79%	87%	88%	83%	85%	88%	89%	93%	84%	96%	78%
DVT by day 2	*	96%	100%	94%	100%	97%	95%	92%	97%	97%	97%	100%	94%	100%	97%	94%	80%
Smoking Cessation	^	66%	71%	64%	81%	93%	100%	95%	100%	95%	100%	100%	100%	94%	92%	83%	73%
A-FIB	^	64%	75%	78%	75%	100%	100%	100%	83%	100%	100%	100%	100%	100%	89%	99%	98%
TPA CONSIDERED (DOC)			40%	42%	38%	73%	43%	38%	45%	75%	50%	67%	73%	92%	55%		
Plan for Rehab		94%	85%	82%	86%	89%	91%	94%	97%	89%	89%	95%	97%	100%	90%	96%	89%
Education		75%	79%	87%	82%	84%	88%	86%	82%	78%	89%	77%	78%	91%	83%	93%	62%

	Below Avg of All Hospitals Reporting in US
	Between Top 10% & Avg of All Hospital Reporting in US
	Equal to or Above Top 10% of All Hospitals Reporting
^	85% or Greater for 3 Consecutive Months for GWTG Recognition
*	85% or Greater for 12 Consecutive Months for

# A Look Inside the Dashboard



Quality Measures	Jan 05	Feb 05	Mar 05	Apr 05	May 05	Jun 05	Jul 05	Aug 05	Sep 05	Oct 05	Nov 05	Dec 05	2005 YTD
<b>Stroke Indicators</b>													
Dysphagia Screens	73%	87%	71%	81%	77%	66%	70%	59%	69%	65%	77%	74%	72%
Discharge on Antithrombotics	93%	93%	100%	100%	100%	99%	99%	99%	97%	98%	99%	98%	98%
Throm w/in 48hrs	100%	96%	100%	98%	100%	96%	98%	99%	94%	97%	99%	98%	98%
Lipid Profile	85%	80%	77%	74%	79%	87%	88%	83%	85%	88%	89%	93%	84%
DVT by day 2	100%	94%	100%	97%	95%	92%	97%	97%	97%	100%	94%	100%	97%
Smoking Cessation	71%	64%	81%	93%	100%	95%	100%	95%	100%	100%	100%	94%	92%
A-FIB	75%	78%	75%	100%	100%	100%	83%	100%	100%	100%	100%	100%	89%
TPA CONSIDERED (DOC)	40%	42%	38%	73%	43%	38%	45%	75%	50%	67%	73%	92%	55%
Plan for Rehab	85%	82%	86%	89%	91%	94%	97%	89%	89%	95%	97%	100%	90%
Education	79%	87%	82%	84%	88%	86%	82%	78%	89%	77%	78%	91%	83%

04/30/2009 13:37

STROKE CENTER FMC

3367187598

#054

Page 01/01

**OUTCOME**

[Patients](#)

[Download](#)

[Reports](#)

[My Account](#)

[Home](#)

Current User: Gwen Ainsworth Site: Forsyth Medical Center Site ID: 24302

[Back to Report List](#)

**Configurable Measure Reports**

[Generate Report](#)

**TIME PERIOD**

Interval:  Monthly  Aggregate

From: 2005 Jan

To: 2005 Dec

Measure D  
Measure D  
Measure D  
Measure D  
Measure D

**REPORT 1**

Measure: **\*\*Consensus-TJC/PSC Set\*\***

Measure group with all 10 Consensus Measures with case inclusion by ICD-9 Codes (excluding TIA)

Format: **Bar Chart**

- 301+ Discharges Hospital
- 751+ Bed Hospital
- Academic Hospitals
- All Hospitals
- All NC Hospitals
- Certified JC PSC Hospitals
- JC PSC Hospitals
- My Hospital**
- South Atlantic Hospitals
- South Region Hospitals

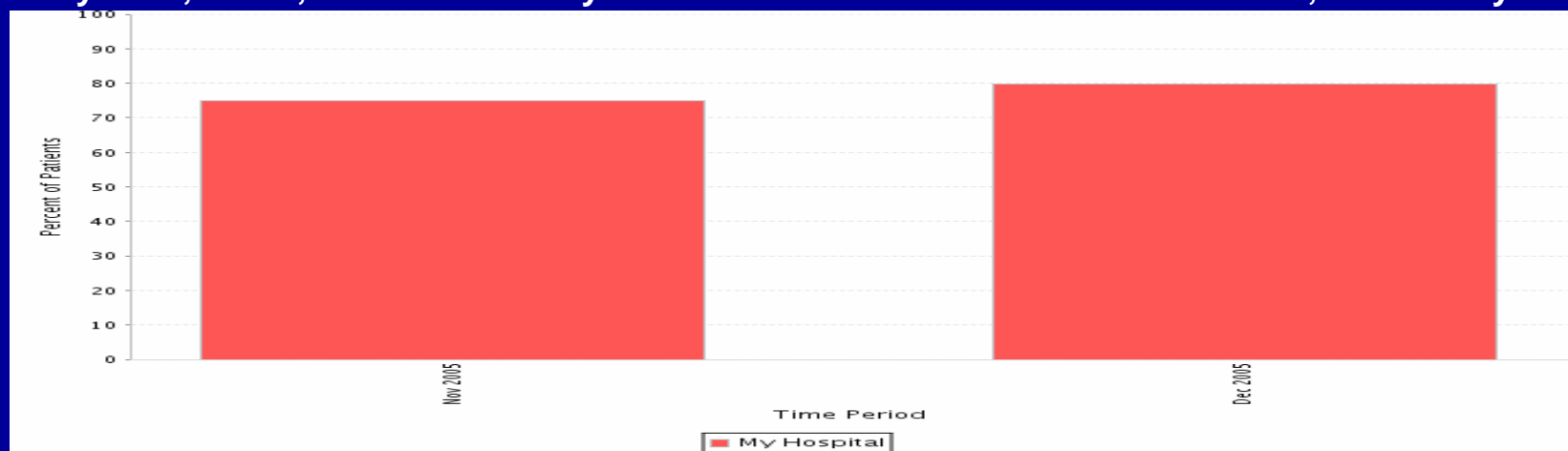
Compare to:  
(ctrl-click to select multiple)

[Add Another Report](#)

**FILTER OPTIONS** [SHOW](#)

**PSC Stroke-7\***

Percent of patients with ischemic or hemorrhagic stroke who undergo screening for dysphagia with an evidence-based bedside testing protocol approved by the hospital before being given any food, fluids, or medication by mouth. Time Period: Nov 2005 - Dec 2005; Site: Forsyth



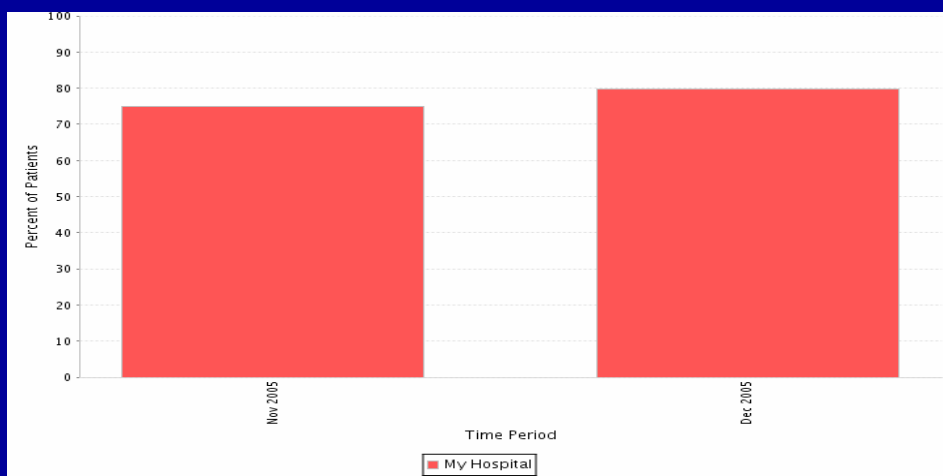
**PSC Stroke-7\***

Benchmark Group	Time Period	Numerator	Denominator	% of Patients
My Hospital	Nov 2005	45	60	75.0%
	Dec 2005	43	54	79.6%

	A	B	C	D	E	F	G
3	Indicator						
4		Dysphagia Screens			Discharge on Antithrombotics		
5		Num	Dem	Obsv	Num	Den	Obsv
6				= (B 18 / C 18)			= (E 18 / F 18)
7				= (B 19 / C 19)			= (E 19 / F 19)
8				= (B 20 / C 20)			= (E 20 / F 20)
18	Jan-05	36	49	73%	51	55	93%
19	Feb-05	46	53	87%	54	58	93%
20	Mar-05	27	38	71%	47	47	100%
21	Apr-05	26	32	81%	40	40	100%
22	May-05	20	26	77%	50	50	100%
23	Jun-05	42	64	66%	70	71	99%
24	Jul-05	44	63	70%	76	77	99%
25	Aug-05	30	51	59%	82	83	99%
26	Sep-05	35	51	69%	60	62	97%
27	Oct-05	37	57	65%	64	65	98%
28	Nov-05	43	56	77%	70	71	99%
29	Dec-05	34	46	74%	59	60	98%
31	2005 YTD Total	72%			98%		
	2005 YTD Formula	= SUM (B 18 : B 29) / SUM (C 18 : C 29)					

	A	B	C	D	E	F	G
3	Indicator						
4		Dysphagia Screens			Discharge on Antithrombotics		
5		Num	Den	Obsv	Num	Den	Obsv
6				= $(B18/C18)$			= $(E18/F18)$
7				= $(B19/C19)$			= $(E19/F19)$
8				= $(B20/C20)$			= $(E20/F20)$
18	Jan-05	36	49	73%	51	55	93%
19	Feb-05	46	53	87%	54	58	93%
20	Mar-05	27	38	71%	47	47	100%
21	Apr-05	26	32	81%	40	40	100%
22	May-05	20	26	77%	50	50	100%
23	Jun-05	42	64	66%	70	71	99%
24	Jul-05	44	63	70%	76	77	99%
25	Aug-05	30	51	59%	82	83	99%
26	Sep-05	35	51	69%	60	62	97%
27	Oct-05	37	57	65%	64	65	98%
28	Nov-05	43	56	77%	70	71	99%
29	Dec-05	34	46	74%	59	60	98%
31	2005 YTD Total	72%		98%			
	2005 YTD Formula	= $SUM(B18:B29)/SUM(C18:C29)$					

**PSC Stroke-7\***  
 Percent of patients with ischemic or hemorrhagic stroke who undergo screening for dysphagia with an evidence-based bedside testing protocol approved by the hospital before being given any food, fluids, or medication by mouth. Time Period: Nov 2005 - Dec 2005; Site: Forsyth Medical Center (24302) Completeness: Include Only Complete



PSC Stroke-7*				
Denominator	Time Period	Numerator	Denominator	% of Patients
My Hospital	Nov 2005	45	60	75%
	Dec 2005	43	54	79%

Quality Measures	Jan 05	Feb 05	Mar 05	Apr 05	May 05	Jun 05	Jul 05	Aug 05	Sep 05	Oct 05	Nov 05	Dec 05	2005 YTD
<b>Stroke Indicators</b>													
Dysphagia Screens	73%	87%	71%	81%	77%	66%	70%	59%	69%	65%	77%	74%	72%
Discharge on Antithrombotics	93%	93%	100%	100%	100%	99%	99%	99%	97%	98%	99%	98%	98%
Throm w/in 48hrs	100%	96%	100%	98%	100%	96%	98%	99%	94%	97%	99%	98%	98%
Lipid Profile	85%	80%	77%	74%	79%	87%	88%	83%	85%	88%	89%	93%	84%
DVT by day 2	100%	94%	100%	97%	95%	92%	97%	97%	97%	100%	94%	100%	97%
Smoking Cessation	71%	64%	81%	93%	100%	95%	100%	95%	100%	100%	100%	94%	92%
A-FIB	75%	78%	75%	100%	100%	100%	83%	100%	100%	100%	100%	100%	89%
TPA CONSIDERED (DOC)	40%	42%	38%	73%	43%	38%	45%	75%	50%	67%	73%	92%	55%
Plan for Rehab	85%	82%	86%	89%	91%	94%	97%	89%	89%	95%	97%	100%	90%
Education	79%	87%	82%	84%	88%	86%	82%	78%	89%	77%	78%	91%	83%

Quality Measures	Aug 05	Sep 05	Oct 05	Nov 05	Dec 05	2005 YTD
<b>Stroke Indicators</b>						
Dysphagia Screens	59%	69%	65%	= 'Combined Indicator Data'!\$D\$28	74%	72%
Discharge on Antithrombotics	99%	97%	98%	= 'Combined Indicator Data'!\$G\$28	98%	98%
Throm w/in 48hrs	99%	94%	97%			98%
Lipid Profile	83%	85%	88%			84%
DVT by day 2	97%	97%	100%			97%
Smoking Cessation	95%	100%	100%			92%
A-FIB	100%	100%	100%			89%
TPA CONSIDERED (DOC)	75%	50%	67%			55%
Plan for Rehab	89%	89%	95%			90%
Education	78%	89%	77%			83%

**Name of the Worksheet that houses the data**

	A	B	C	D
3	Indicator			
4		Dysphagia Screens		
5		Num	Dem	Obsv
6				=(B18/C18)
7				=(B19/C19)
8				=(B20/C20)
18	Jan-05	36	49	73%
19	Feb-05	46	53	87%
20	Mar-05	27	38	71%
21	Apr-05	26	32	81%
22	May-05	20	26	77%
23	Jun-05	42	64	66%
24	Jul-05	44	63	70%
25	Aug-05	30	51	59%
26	Sep-05	35	51	69%
27	Oct-05	37	57	65%
28	Nov-05	43	56	77%
29	Dec-05	34	46	74%
31	2005 YTD Total	72%		

Quality Measures	Oct 05	Nov 05	Dec 05	2005 YTD
Stroke Indicators				
Dysphagia Screens	68%	=Combined Indicator Data!\$D\$28	74%	=Combined Indicator Data!\$E\$31
Discharge on Antithrombotics	98%	=Combined Indicator Data!\$G\$28	98%	98%
Thromwin 48hrs	97%			98%
Lipid Profile	88%			84%
DVT by day 2	100%			97%
Smoking Cessation	100%			92%
ARI	100%			89%
TPA CONSIDERED (DOC)	67%			55%
Plan for Rehab	98%			90%
Education	77%			83%

Quality Measures	Jan 05	Feb 05	Mar 05	Apr 05	May 05	Jun 05	Jul 05	Aug 05	Sep 05	Oct 05	Nov 05	Dec 05	2005 YTD
<b>Stroke Indicators</b>													
Dysphagia Screens	73%	87%	71%	81%	77%	66%	70%	59%	69%	65%	77%	74%	72%
Discharge on Antithrombotics	93%	93%	100%	100%	100%	99%	99%	99%	97%	98%	99%	98%	98%
Throm w/in 48hrs	100%	96%	100%	98%	100%	96%	98%	99%	94%	97%	99%	98%	98%
Lipid Profile	85%	80%	77%	74%	79%	87%	88%	83%	85%	88%	89%	93%	84%
DVT by day 2	100%	94%	100%	97%	95%	92%	97%	97%	97%	100%	94%	100%	97%
Smoking Cessation	71%	64%	81%	93%	100%	95%	100%	95%	100%	100%	100%	94%	92%
A-FIB	75%	78%	75%	100%	100%	100%	83%	100%	100%	100%	100%	100%	89%
TPA CONSIDERED (DOC)	40%	42%	38%	73%	43%	38%	45%	75%	50%	67%	73%	92%	55%
Plan for Rehab	85%	82%	86%	89%	91%	94%	97%	89%	89%	95%	97%	100%	90%
Education	79%	87%	82%	84%	88%	86%	82%	78%	89%	77%	78%	91%	83%

**OUTCOME**

[Patients](#) [Download](#) [Reports](#) [My Account](#) [Home](#)

Current User: Gwen Ainsworth Site: Forsyth Medical Center Site ID: 24302

[Back to Report List](#)

**Configurable Measure Reports**

[Generate Report](#)

**TIME PERIOD**

Interval:  Monthly  Aggregate  
 From: 2005 Nov  
 To: 2005 Dec

Measure D  
 Measure D  
 Measure D  
 Measure D  
 Measure D

**REPORT 1**

Measure: **\*\*Consensus-TJC/PSC Set\*\***

Measure group with all 10 Consensus Measures with case inclusion by ICD-9 Codes (excluding TIA)

- Format: **Bar Chart**
- 301+ Discharges Hospital
  - 751+ Bed Hospital
  - Academic Hospitals
  - All Hospitals
  - All NC Hospitals
  - Certified JCI PSC Hospitals
  - JCI PSC Hospitals
  - My Hospital
  - South Atlantic Hospitals
  - South Region Hospitals

Compare to: (ctrl-click to select multiple)

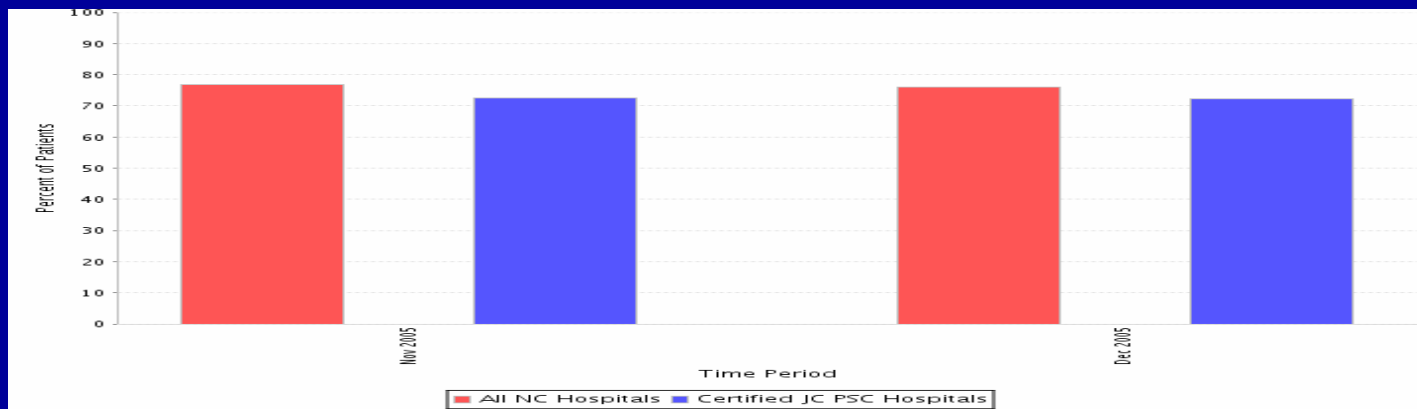
[Add Another Report](#)

**FILTER OPTIONS** HIDE

Note: "Compare selections" only apply to the "My Hospital" comparison group.

PSC Stroke-7\*

Percent of patients with ischemic or hemorrhagic stroke who undergo screening for dysphagia with an evidence-based bedside testing protocol approved by the hospital before being given any food, fluids, or medication by mouth. Time Period: Nov 2005 - Dec 2005; Site: Forsyth Medical Center (24302) Completeness: Include Only Complete Records



PSC Stroke-7\*

Benchmark Group	Time Period	Numerator	Denominator	% of Patients
All NC Hospitals	Nov 2005	102	133	76.7%
	Dec 2005	102	134	76.1%
Certified JC PSC Hospitals	Nov 2005	1299	1794	72.4%
	Dec 2005	1540	2132	72.2%

# Color Coding the Dashboard

2005 MONTHLY										
Stroke Indicators Hospital Performance: Combined										
Quality Measures	Jun 05	Jul 05	Aug 05	Sep 05	Oct 05	Nov 05	Dec 05	2005 YTD	All NC Hospitals	Certified JC DSC Hospitals
<b>Stroke Indicators</b>										
Dysphagia Screens	66%	70%	59%	69%	65%	77%	74%	72%	91%	60%
Discharge on Antithrombotics	99%	99%	99%	97%	98%	99%	98%	98%	97%	96%
Throm w/in 48hrs	96%	98%	99%	94%	97%	99%	98%	98%	98%	94%
Lipid Profile	87%	88%	83%	85%	88%	89%	93%	84%	96%	78%
DVT by day 2	92%	97%	97%	97%	100%	94%	100%	97%	94%	80%
Smoking Cessation	95%	100%	95%	100%	100%	100%	94%	92%	83%	73%
A-FIB	100%	83%	100%	100%	100%	100%	100%	89%	99%	98%
TPA CONSIDERED (DOC)	38%	45%	75%	50%	67%	73%	92%	55%		
Plan for Rehab	94%	97%	89%	89%	95%	97%	100%	90%	96%	89%
Education	86%	82%	78%	89%	77%	78%	91%	83%	93%	62%
	Below Either of Both Benchmark Hospitals									
	Between Both Benchmark Hospitals									
	Equal to or Above Either of Both Benchmark Hospitals									

## 2005 MONTHLY

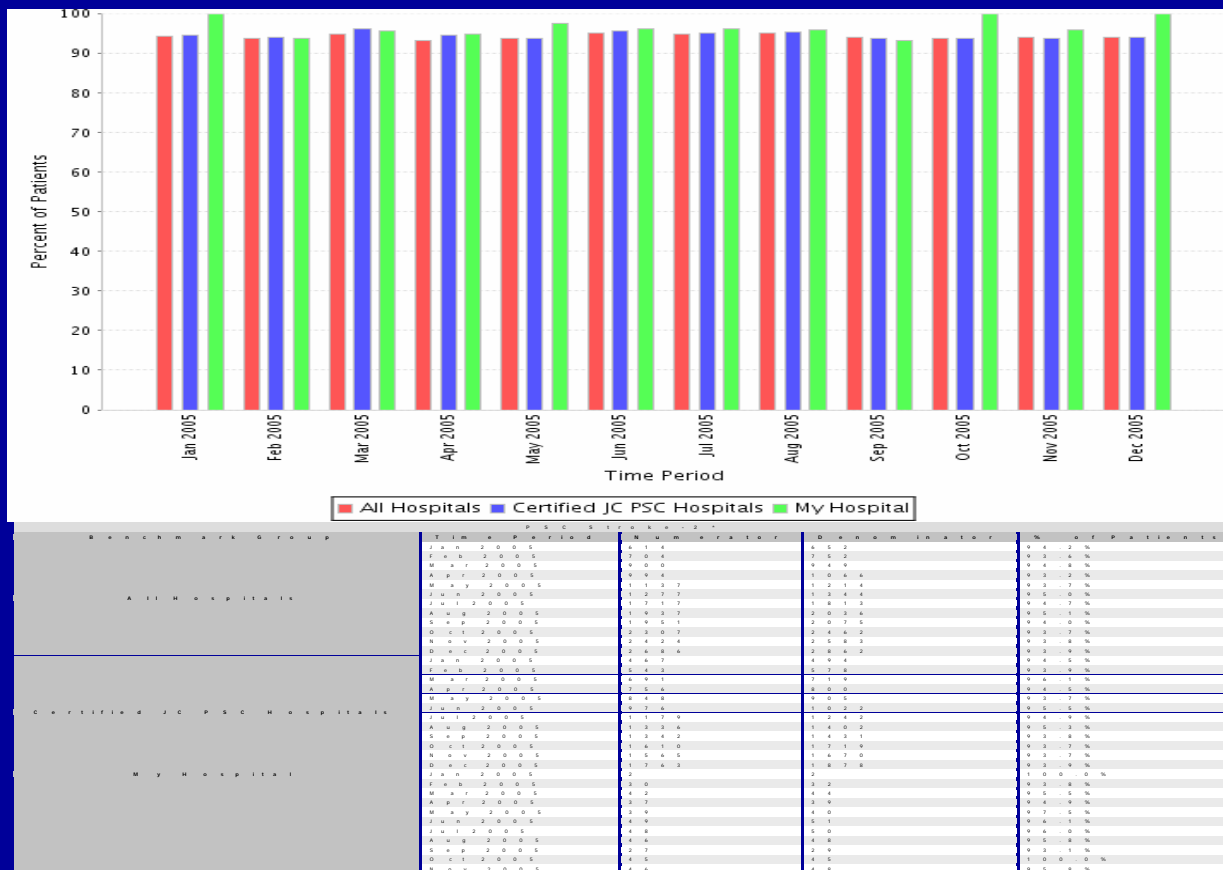
### Stroke Indicators Hospital Performance: Combined

Quality Measures	GWTG	2004 Total	Jan 05	Feb 05	Mar 05	Apr 05	May 05	Jun 05	Jul 05	Aug 05	Sep 05	Oct 05	Nov 05	Dec 05	2005 YTD	Top 10% of Hospitals Nationwide	Avg All Hospitals Reporting in US
<b>Stroke Indicators</b>																	
Dysphagia Screens		68%	73%	87%	71%	81%	77%	66%	70%	59%	69%	65%	77%	74%	72%	91%	60%
Discharge on Antithrombotics	*	99%	93%	93%	100%	100%	100%	99%	99%	99%	97%	98%	99%	98%	98%	97%	96%
Throm w/in 48hrs	*	98%	100%	96%	100%	98%	100%	96%	98%	99%	94%	97%	99%	98%	98%	98%	94%
Lipid Profile	^	77%	85%	80%	77%	74%	79%	87%	88%	83%	85%	88%	89%	93%	84%	96%	78%
DVT by day 2	*	96%	100%	94%	100%	97%	95%	92%	97%	97%	97%	100%	94%	100%	97%	94%	80%
Smoking Cessation	^	66%	71%	64%	81%	93%	100%	95%	100%	95%	100%	100%	100%	94%	92%	83%	73%
A-FIB	^	64%	75%	78%	75%	100%	100%	100%	83%	100%	100%	100%	100%	100%	89%	99%	98%
TPA CONSIDERED (DOC)			40%	42%	38%	73%	43%	38%	45%	75%	50%	67%	73%	92%	55%		
Plan for Rehab		94%	85%	82%	86%	89%	91%	94%	97%	89%	89%	95%	97%	100%	90%	96%	89%
Education		75%	79%	87%	82%	84%	88%	86%	82%	78%	89%	77%	78%	91%	83%	93%	62%

	Below Avg of All Hospitals Reporting in US
	Between Top 10% & Avg of All Hospital Reporting in US
	Equal to or Above Top 10% of All Hospitals Reporting
^	85% or Greater for 3 Consecutive Months for GWTG Recognition
*	85% or Greater for 12 Consecutive Months for

**PSC Stroke-2\***

Percent of patients with an ischemic stroke prescribed antithrombotic therapy at discharge. Time Period: Jan 2005 - Dec 2005; Site: Forsyth Medical Center



# Where are we today?



## 2008 DSC-Stroke Measures Monthly Hospital Performance

Quality Measures	GWTC	2006	2007	Jan 08	Feb 08	Mar 08	Apr 08	May 08	Jun 08	Jul 08	Aug 08	Sep 08	Oct 08	Nov 08	Dec 08	FMC 2008	All North Carolina Hospitals	All National JC PSC Hospitals
Stroke Indicators																YTD	YTD	YTD
Dysphagia Screens		72%	73%	80%	72%	66%	78%	75%	79%	80%	76%	77%	82%	83%	69%	77%	75%	80%
Antithrombotics @ D/C	*	100%	99%	98%	100%	100%	100%	100%	100%	100%	100%	100%	100%	100%	100%	100%	99%	99%
Antithrombotics End of Day 2	*	98%	98%	98%	96%	100%	100%	100%	100%	100%	100%	100%	100%	100%	98%	99%	95%	97%
LDL >100 D/C on Statin Med	*	90%	93%	91%	98%	97%	91%	97%	98%	95%	93%	95%	95%	93%	95%	95%	90%	88%
DVT Prophylaxis End of Day 2	*	96%	98%	98%	95%	100%	100%	100%	100%	100%	100%	96%	100%	100%	100%	99%	96%	95%
Smoking Cessation	*	97%	100%	100%	100%	100%	100%	100%	100%	100%	100%	100%	100%	100%	100%	100%	98%	96%
A-FIB D/C on Anticoagulation	*	100%	100%	100%	100%	100%	100%	100%	100%	100%	100%	100%	100%	100%	100%	100%	97%	96%
TPA IV (< 3 hrs)	*	88%	97%	80%	100%	100%	80%	50%	100%	100%	NA	NA	100%	100%	100%	92%	73%	81%
Rehabilitation Assessment		93%	92%	89%	93%	90%	90%	92%	90%	92%	92%	100%	98%	98%	95%	93%	96%	97%
Education (All 5 Parts)		85%	90%	83%	94%	93%	93%	92%	90%	81%	90%	90%	91%	94%	92%	91%	83%	80%
		Below All NC Hospitals & National Certified Stroke Centers																
		Between All NC Hospital & All National Certified Stroke Centers																
		Equal to or Above All NC Hospitals Reporting & All National Certified Stroke Centers																
▲		85% or Greater for 3 Consecutive Months for AHA/GWTG Bronze Performance Award																
*		85% or Greater for 12 Consecutive Months for AHA/GWTG Silver Performance Award																

## 2005 MONTHLY

### Stroke Indicators Hospital Performance: Combined

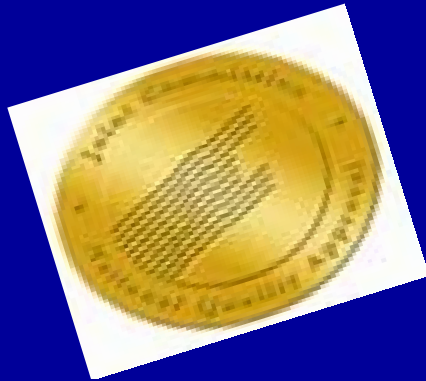
Quality Measures	GWTG	2004 Total	Jan 05	Feb 05	Mar 05	Apr 05	May 05	Jun 05	Jul 05	Aug 05	Sep 05	Oct 05	Nov 05	Dec 05	2005 YTD	Top 10% of Hospitals Nationwide	Avg All Hospitals Reporting in US
<b>Stroke Indicators</b>																	
Dysphagia Screens		68%	73%	87%	71%	81%	77%	66%	70%	59%	69%	65%	77%	74%	72%	91%	60%
Discharge on Antithrombotics	*	99%	93%	93%	100%	100%	100%	99%	99%	99%	97%	98%	99%	98%	98%	97%	96%
Throm w/in 48hrs	*	98%	100%	96%	100%	98%	100%	96%	98%	99%	94%	97%	99%	98%	98%	98%	94%
Lipid Profile	^	77%	85%	80%	77%	74%	79%	87%	88%	83%	85%	88%	89%	93%	84%	96%	78%
DVT by day 2	*	96%	100%	94%	100%	97%	95%	92%	97%	97%	97%	100%	94%	100%	97%	94%	80%
Smoking Cessation	^	66%	71%	64%	81%	93%	100%	95%	100%	95%	100%	100%	100%	94%	92%	83%	73%
A-FIB	^	64%	75%	78%	75%	100%	100%	100%	83%	100%	100%	100%	100%	100%	89%	99%	98%
TPA CONSIDERED (DOC)			40%	42%	38%	73%	43%	38%	45%	75%	50%	67%	73%	92%	55%		
Plan for Rehab		94%	85%	82%	86%	89%	91%	94%	97%	89%	89%	95%	97%	100%	90%	96%	89%
Education		75%	79%	87%	82%	84%	88%	86%	82%	78%	89%	77%	78%	91%	83%	93%	62%

	Below Avg of All Hospitals Reporting in US
	Between Top 10% & Avg of All Hospital Reporting in US
	Equal to or Above Top 10% of All Hospitals Reporting
^	85% or Greater for 3 Consecutive Months for GWTG Recognition
*	85% or Greater for 12 Consecutive Months for

## 2009 DSC-CMS Performance Dashboard Beginning October 1, 2009

Quality Measures	C M S	2 0 0 7	2 0 0 8	J a n	F e b	M a r	FMC 2009	All NC Hospitals	Certified JC PSC Hospitals
							YTD	YTD	YTD
PSC-1 DVT Prophylaxis End of Day 2	*	98%	99%	100%	96%	100%	99%	98%	96%
PSC-2 Antithrombotics @ D/C	*	99%	100%	98%	100%	100%	99%	99%	99%
PSC-3 A-FIB D/C on Anticoagulation	*	100%	100%	100%	100%	100%	100%	96%	97%
PSC-4 t-PA IV (< 3 hrs)	*	97%	92%	100%	100%	100%	100%	82%	80%
PSC-5 Antithrombotics End of Day 2	*	98%	99%	100%	100%	100%	100%	98%	98%
PSC-6 LDL >100 D/C on Statin Med	*	93%	95%	98%	100%	100%	99%	92%	91%
PSC-7 Dysphagia Screens		73%	77%	73%	78%	85%	78%	79%	85%
PSC-8 Education	*	90%	91%	92%	96%	95%	94%	75%	88%
PSC-9 Smoking Cessation		100%	100%	100%	100%	100%	100%	98%	98%
PSC-10 Rehabilitation Assessment	*	92%	93%	95%	96%	97%	96%	97%	97%
		Below All NC Hospitals & National Certified Stroke Centers							
		Between All NC Hospital & All National Certified Stroke Centers							
		Equal to or Above All NC Hospitals Reporting & All National Certified							
	*	Measures reportable to CMS beginning October 2009							

## TJC Stroke Certification



1<sup>st</sup> time in 2004

(valid for 2 years)

again in 2006, again in 2008

4<sup>th</sup> time **hopefully** in June 2010

GWTG Performance Achievement Awards  
Presented with Silver Award - ISC in San Diego  
Applied for Gold this past March, 2009



# Stroke Interdisciplinary Team – 2008

## Remarkable People, Remarkable Medicine



# Questions?

Thank you,  
Gwen Ainsworth